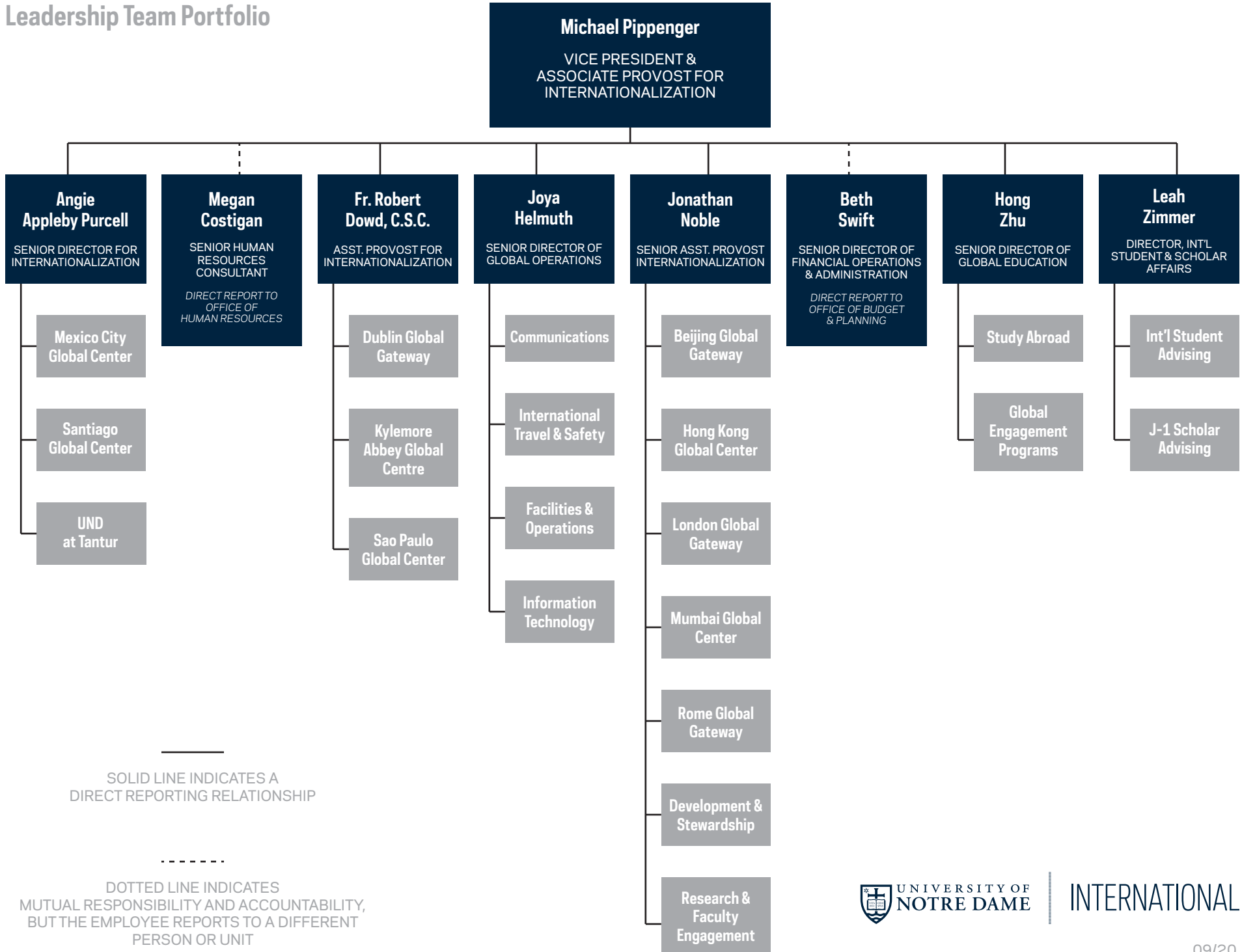


Leadership Team Portfolio



SOLID LINE INDICATES A
DIRECT REPORTING RELATIONSHIP

DOTTED LINE INDICATES
MUTUAL RESPONSIBILITY AND ACCOUNTABILITY,
BUT THE EMPLOYEE REPORTS TO A DIFFERENT
PERSON OR UNIT



INTERNATIONAL